



**Australian  
Bureau of  
Statistics**

June 1995

# Monthly Summary of Statistics Victoria

*Statistics*

1000	1001	1002	1003	1004	1005	1006	1007	1008	1009	1010	1011	1012	1013	1014	1015	1016	1017	1018	1019	1020	1021	1022	1023	1024	1025	1026	1027	1028	1029	1030	1031	1032	1033	1034	1035	1036	1037	1038	1039	1040	1041	1042	1043	1044	1045	1046	1047	1048	1049	1050	1051	1052	1053	1054	1055	1056	1057	1058	1059	1060	1061	1062	1063	1064	1065	1066	1067	1068	1069	1070	1071	1072	1073	1074	1075	1076	1077	1078	1079	1080	1081	1082	1083	1084	1085	1086	1087	1088	1089	1090	1091	1092	1093	1094	1095	1096	1097	1098	1099	1100	1101	1102	1103	1104	1105	1106	1107	1108	1109	1110	1111	1112	1113	1114	1115	1116	1117	1118	1119	1120	1121	1122	1123	1124	1125	1126	1127	1128	1129	1130	1131	1132	1133	1134	1135	1136	1137	1138	1139	1140	1141	1142	1143	1144	1145	1146	1147	1148	1149	1150	1151	1152	1153	1154	1155	1156	1157	1158	1159	1160	1161	1162	1163	1164	1165	1166	1167	1168	1169	1170	1171	1172	1173	1174	1175	1176	1177	1178	1179	1180	1181	1182	1183	1184	1185	1186	1187	1188	1189	1190	1191	1192	1193	1194	1195	1196	1197	1198	1199	1200	1201	1202	1203	1204	1205	1206	1207	1208	1209	1210	1211	1212	1213	1214	1215	1216	1217	1218	1219	1220	1221	1222	1223	1224	1225	1226	1227	1228	1229	1230	1231	1232	1233	1234	1235	1236	1237	1238	1239	1240	1241	1242	1243	1244	1245	1246	1247	1248	1249	1250	1251	1252	1253	1254	1255	1256	1257	1258	1259	1260	1261	1262	1263	1264	1265	1266	1267	1268	1269	1270	1271	1272	1273	1274	1275	1276	1277	1278	1279	1280	1281	1282	1283	1284	1285	1286	1287	1288	1289	1290	1291	1292	1293	1294	1295	1296	1297	1298	1299	1300	1301	1302	1303	1304	1305	1306	1307	1308	1309	1310	1311	1312	1313	1314	1315	1316	1317	1318	1319	1320	1321	1322	1323	1324	1325	1326	1327	1328	1329	1330	1331	1332	1333	1334	1335	1336	1337	1338	1339	1340	1341	1342	1343	1344	1345	1346	1347	1348	1349	1350	1351	1352	1353	1354	1355	1356	1357	1358	1359	1360	1361	1362	1363	1364	1365	1366	1367	1368	1369	1370	1371	1372	1373	1374	1375	1376	1377	1378	1379	1380	1381	1382	1383	1384	1385	1386	1387	1388	1389	1390	1391	1392	1393	1394	1395	1396	1397	1398	1399	1400	1401	1402	1403	1404	1405	1406	1407	1408	1409	1410	1411	1412	1413	1414	1415	1416	1417	1418	1419	1420	1421	1422	1423	1424	1425	1426	1427	1428	1429	1430	1431	1432	1433	1434	1435	1436	1437	1438	1439	1440	1441	1442	1443	1444	1445	1446	1447	1448	1449	1450	1451	1452	1453	1454	1455	1456	1457	1458	1459	1460	1461	1462	1463	1464	1465	1466	1467	1468	1469	1470	1471	1472	1473	1474	1475	1476	1477	1478	1479	1480	1481	1482	1483	1484	1485	1486	1487	1488	1489	1490	1491	1492	1493	1494	1495	1496	1497	1498	1499	1500	1501	1502	1503	1504	1505	1506	1507	1508	1509	1510	1511	1512	1513	1514	1515	1516	1517	1518	1519	1520	1521	1522	1523	1524	1525	1526	1527	1528	1529	1530	1531	1532	1533	1534	1535	1536	1537	1538	1539	1540	1541	1542	1543	1544	1545	1546	1547	1548	1549	1550	1551	1552	1553	1554	1555	1556	1557	1558	1559	1560	1561	1562	1563	1564	1565	1566	1567	1568	1569	1570	1571	1572	1573	1574	1575	1576	1577	1578	1579	1580	1581	1582	1583	1584	1585	1586	1587	1588	1589	1590	1591	1592	1593	1594	1595	1596	1597	1598	1599	1600	1601	1602	1603	1604	1605	1606	1607	1608	1609	1610	1611	1612	1613	1614	1615	1616	1617	1618	1619	1620	1621	1622	1623	1624	1625	1626	1627	1628	1629	1630	1631	1632	1633	1634	1635	1636	1637	1638	1639	1640	1641	1642	1643	1644	1645	1646	1647	1648	1649	1650	1651	1652	1653	1654	1655	1656	1657	1658	1659	1660	1661	1662	1663	1664	1665	1666	1667	1668	1669	1670	1671	1672	1673	1674	1675	1676	1677	1678	1679	1680	1681	1682	1683	1684	1685	1686	1687	1688	1689	1690	1691	1692	1693	1694	1695	1696	1697	1698	1699	1700	1701	1702	1703	1704	1705	1706	1707	1708	1709	1710	1711	1712	1713	1714	1715	1716	1717	1718	1719	1720	1721	1722	1723	1724	1725	1726	1727	1728	1729	1730	1731	1732	1733	1734	1735	1736	1737	1738	1739	1740	1741	1742	1743	1744	1745	1746	1747	1748	1749	1750	1751	1752	1753	1754	1755	1756	1757	1758	1759	1760	1761	1762	1763	1764	1765	1766	1767	1768	1769	1770	1771	1772	1773	1774	1775	1776	1777	1778	1779	1780	1781	1782	1783	1784	1785	1786	1787	1788	1789	1790	1791	1792	1793	1794	1795	1796	1797	1798	1799	1800	1801	1802	1803	1804	1805	1806	1807	1808	1809	1810	1811	1812	1813	1814	1815	1816	1817	1818	1819	1820	1821	1822	1823	1824	1825	1826	1827	1828	1829	1830	1831	1832	1833	1834	1835	1836	1837	1838	1839	1840	1841	1842	1843	1844	1845	1846	1847	1848	1849	1850	1851	1852	1853	1854	1855	1856	1857	1858	1859	1860	1861	1862	1863	1864	1865	1866	1867	1868	1869	1870	1871	1872	1873	1874	1875	1876	1877	1878	1879	1880	1881	1882	1883	1884	1885	1886	1887	1888	1889	1890	1891	1892	1893	1894	1895	1896	1897	1898	1899	1900	1901	1902	1903	1904	1905	1906	1907	1908	1909	1910	1911	1912	1913	1914	1915	1916	1917	1918	1919	1920	1921	1922	1923	1924	1925	1926	1927	1928	1929	1930	1931	1932	1933	1934	1935	1936	1937	1938	1939	1940	1941	1942	1943	1944	1945	1946	1947	1948	1949	1950	1951	1952	1953	1954	1955	1956	1957	1958	1959	1960	1961	1962	1963	1964	1965	1966	1967	1968	1969	1970	1971	1972	1973	1974	1975	1976	1977	1978	1979	1980	1981	1982	1983	1984	1985	1986	1987	1988	1989	1990	1991	1992	1993	1994	1995	1996	1997	1998	1999	2000	2001	2002	2003	2004	2005	2006	2007	2008	2009	2010	2011	2012	2013	2014	2015	2016	2017	2018	2019	2020	2021	2022	2023	2024	2025	2026	2027	2028	2029	2030	2031	2032	2033	2034	2035	2036	2037	2038	2039	2040	2041	2042	2043	2044	2045	2046	2047	2048	2049	2050	2051	2052	2053	2054	2055	2056	2057	2058	2059	2060	2061	2062	2063	2064	2065	2066	2067	2068	2069	2070	2071	2072	2073	2074	2075	2076	2077	2078	2079	2080	2081	2082	2083	2084	2085	2086	2087	2088	2089	2090	2091	2092	2093	2094	2095	2096	2097	2098	2099	2100	2101	2102	2103	2104	2105	2106	2107	2108	2109	2110	2111	2112	2113	2114	2115	2116	2117	2118	2119	2120	2121	2122	2123	2124	2125	2126	2127	2128	2129	2130	2131	2132	2133	2134	2135	2136	2137	2138	2139	2140	2141	2142	2143	2144	2145	2146	2147	2148	2149	2150	2151	2152	2153	2154	2155	2156	2157	2158	2159	2160	2161	2162	2163	2164	2165	2166	2167	2168	2169	2170	2171	2172	2173	2174	2175	2176	2177	2178	2179	2180	2181	2182	2183	2184	2185	2186	2187	2188	2189	2190	2191	2192	2193	2194	2195	2196	2197	2198	2199	2200	2201	2202	2203	2204	2205	2206	2207	2208	2209	2210	2211	2212	2213	2214	2215	2216	2217	2218	2219	2220	2221	2222	2223	2224	2225	2226	2227	2228	2229	2230	2231	2232	2233	2234	2235	2236	2237	2238	2239	2240	2241	2242	2243	2244	2245	2246	2247	2248	2249	2250	2251	2252	2253	2254	2255	2256	2257	2258	2259	2260	2261	2262	2263	2264	2265	2266	2267	2268	2269	2270	2271	2272	2273	2274	2275	2276	2277	2278	2279	2280	2281	2282	2283	2284	2285	2286	2287	2288	2289	2290	2291	2292	2293	2294	2295	2296	2297	2298	2299	2300	2301	2302	2303	2304	2305	2306	2307	2308	2309	2310	2311	2312	2313	2314	2315	2316	2317	2318	2319	2320	2321	2322	2323	2324	2325	2326	2327	2328	2329	2330	2331	2332	2333	2334	2335	2336	2337	2338	2339	2340	2341	2342	2343	2344	2345	234
------	------	------	------	------	------	------	------	------	------	------	------	------	------	------	------	------	------	------	------	------	------	------	------	------	------	------	------	------	------	------	------	------	------	------	------	------	------	------	------	------	------	------	------	------	------	------	------	------	------	------	------	------	------	------	------	------	------	------	------	------	------	------	------	------	------	------	------	------	------	------	------	------	------	------	------	------	------	------	------	------	------	------	------	------	------	------	------	------	------	------	------	------	------	------	------	------	------	------	------	------	------	------	------	------	------	------	------	------	------	------	------	------	------	------	------	------	------	------	------	------	------	------	------	------	------	------	------	------	------	------	------	------	------	------	------	------	------	------	------	------	------	------	------	------	------	------	------	------	------	------	------	------	------	------	------	------	------	------	------	------	------	------	------	------	------	------	------	------	------	------	------	------	------	------	------	------	------	------	------	------	------	------	------	------	------	------	------	------	------	------	------	------	------	------	------	------	------	------	------	------	------	------	------	------	------	------	------	------	------	------	------	------	------	------	------	------	------	------	------	------	------	------	------	------	------	------	------	------	------	------	------	------	------	------	------	------	------	------	------	------	------	------	------	------	------	------	------	------	------	------	------	------	------	------	------	------	------	------	------	------	------	------	------	------	------	------	------	------	------	------	------	------	------	------	------	------	------	------	------	------	------	------	------	------	------	------	------	------	------	------	------	------	------	------	------	------	------	------	------	------	------	------	------	------	------	------	------	------	------	------	------	------	------	------	------	------	------	------	------	------	------	------	------	------	------	------	------	------	------	------	------	------	------	------	------	------	------	------	------	------	------	------	------	------	------	------	------	------	------	------	------	------	------	------	------	------	------	------	------	------	------	------	------	------	------	------	------	------	------	------	------	------	------	------	------	------	------	------	------	------	------	------	------	------	------	------	------	------	------	------	------	------	------	------	------	------	------	------	------	------	------	------	------	------	------	------	------	------	------	------	------	------	------	------	------	------	------	------	------	------	------	------	------	------	------	------	------	------	------	------	------	------	------	------	------	------	------	------	------	------	------	------	------	------	------	------	------	------	------	------	------	------	------	------	------	------	------	------	------	------	------	------	------	------	------	------	------	------	------	------	------	------	------	------	------	------	------	------	------	------	------	------	------	------	------	------	------	------	------	------	------	------	------	------	------	------	------	------	------	------	------	------	------	------	------	------	------	------	------	------	------	------	------	------	------	------	------	------	------	------	------	------	------	------	------	------	------	------	------	------	------	------	------	------	------	------	------	------	------	------	------	------	------	------	------	------	------	------	------	------	------	------	------	------	------	------	------	------	------	------	------	------	------	------	------	------	------	------	------	------	------	------	------	------	------	------	------	------	------	------	------	------	------	------	------	------	------	------	------	------	------	------	------	------	------	------	------	------	------	------	------	------	------	------	------	------	------	------	------	------	------	------	------	------	------	------	------	------	------	------	------	------	------	------	------	------	------	------	------	------	------	------	------	------	------	------	------	------	------	------	------	------	------	------	------	------	------	------	------	------	------	------	------	------	------	------	------	------	------	------	------	------	------	------	------	------	------	------	------	------	------	------	------	------	------	------	------	------	------	------	------	------	------	------	------	------	------	------	------	------	------	------	------	------	------	------	------	------	------	------	------	------	------	------	------	------	------	------	------	------	------	------	------	------	------	------	------	------	------	------	------	------	------	------	------	------	------	------	------	------	------	------	------	------	------	------	------	------	------	------	------	------	------	------	------	------	------	------	------	------	------	------	------	------	------	------	------	------	------	------	------	------	------	------	------	------	------	------	------	------	------	------	------	------	------	------	------	------	------	------	------	------	------	------	------	------	------	------	------	------	------	------	------	------	------	------	------	------	------	------	------	------	------	------	------	------	------	------	------	------	------	------	------	------	------	------	------	------	------	------	------	------	------	------	------	------	------	------	------	------	------	------	------	------	------	------	------	------	------	------	------	------	------	------	------	------	------	------	------	------	------	------	------	------	------	------	------	------	------	------	------	------	------	------	------	------	------	------	------	------	------	------	------	------	------	------	------	------	------	------	------	------	------	------	------	------	------	------	------	------	------	------	------	------	------	------	------	------	------	------	------	------	------	------	------	------	------	------	------	------	------	------	------	------	------	------	------	------	------	------	------	------	------	------	------	------	------	------	------	------	------	------	------	------	------	------	------	------	------	------	------	------	------	------	------	------	------	------	------	------	------	------	------	------	------	------	------	------	------	------	------	------	------	------	------	------	------	------	------	------	------	------	------	------	------	------	------	------	------	------	------	------	------	------	------	------	------	------	------	------	------	------	------	------	------	------	------	------	------	------	------	------	------	------	------	------	------	------	------	------	------	------	------	------	------	------	------	------	------	------	------	------	------	------	------	------	------	------	------	------	------	------	------	------	------	------	------	------	------	------	------	------	------	------	------	------	------	------	------	------	------	------	------	------	------	------	------	------	------	------	------	------	------	------	------	------	------	------	------	------	------	------	------	------	------	------	------	------	------	------	------	------	------	------	------	------	------	------	------	------	------	------	------	------	------	------	------	------	------	------	------	------	------	------	------	------	------	------	------	------	------	------	------	------	------	------	------	------	------	------	------	------	------	------	------	------	------	------	------	------	------	------	------	------	------	------	------	------	------	------	------	------	------	------	------	------	------	------	------	------	------	------	------	------	------	------	------	------	------	------	------	------	------	------	------	------	------	------	------	------	------	------	------	------	------	------	------	------	------	------	------	------	------	------	------	------	------	------	------	------	------	------	------	------	------	------	------	------	------	------	------	------	------	------	------	------	------	------	------	------	------	------	------	------	------	------	------	------	------	------	------	------	------	------	------	------	------	------	------	------	------	------	------	------	------	------	------	------	------	------	------	------	------	------	------	------	------	------	------	------	------	------	------	------	------	------	------	------	------	------	------	------	------	------	------	------	------	------	------	------	------	------	------	------	------	------	------	------	------	------	------	------	------	------	------	------	------	------	------	------	------	------	------	------	------	------	------	------	------	------	------	------	------	------	------	------	------	------	------	------	------	------	------	------	------	------	------	------	------	------	------	------	------	------	------	------	------	------	------	------	------	------	------	------	------	------	------	------	------	------	------	------	------	------	------	-----



20 July 1995

**MONTHLY SUMMARY  
OF STATISTICS  
VICTORIA**

**JUNE 1995**

**STUART JACKSON**  
*Deputy Commonwealth Statistician*

© Commonwealth of Australia 1995

# MONTHLY SUMMARY OF STATISTICS

## VICTORIA, JUNE 1995

### CONTENTS

Table		Page
	<b>ECONOMIC INDICATORS</b>	
1	Victoria in relation to other States and Australia	2
2	Economic Indicators, Victoria and Australia	3
	<b>DEMOGRAPHY</b>	
3	Estimated Resident Population	6
4	Births, deaths, and marriages	6
	<b>LABOUR</b>	
5	Labour force status of the civilian population aged 15 years and over	7
6	Employed persons by industry	8
7	Job vacancies	9
8	Industrial disputes causing stoppage of work	9
	<b>WAGES AND PRICES</b>	
9	Average Weekly Earnings, all employees	9
10	Consumer Price Index	10
11	Price Index of Materials Used in Building, Melbourne	10
	<b>PRODUCTION</b>	
12	Livestock slaughterings	11
13	Meat production	11
	<b>BUILDING</b>	
14	Building approvals	12
15	New houses and other residential buildings: number of dwelling units	13
16	Value of building	13
	<b>FINANCE</b>	
17	Statement of Budget Sector Transactions	14
18	Actual private new capital expenditure by industry group and type of asset	15
19	Commercial Finance Commitments, Victoria	15
20	Housing finance for owner occupation, secured loans to individuals by type of lender	16
	<b>TRADE</b>	
21	Retail sales by industry (excl. motor vehicles, parts, petrol, etc.)	16
22	Exports and imports by sections of the Australian Export and Import Commodity Classifications	17
23	Overseas trade, major trading partners	17
24	Value of overseas trade, Victoria and Australia	18
	<b>TOURISM</b>	
25	Tourist accommodation	18

**INQUIRIES:** . For further information about statistics in this publication and the availability of related unpublished statistics, please contact Information Services on Melbourne (03) 615 7000 or any ABS State office.

## NOTES

The aim of this publication is to provide users with a range of the latest statistics available at the end of each month of issue. Consequently the dates and periods shown are not always the same for each table, but are in each case the latest figures available at that time.

### Seasonal adjustment

Seasonal adjustment is a means of removing the estimated effects of normal seasonal variations from economic time series so the effects of other influences are obvious. Seasonal variations are the systematic (though not necessarily regular) intra-year movements of economic time series. These are often the result of non-economic phenomena, such as climatic changes, and regular religious festivals e.g. Christmas and Easter.

### Trend Estimate

Smoothing seasonally adjusted series produces a measure of trend by removing the impact of the irregular component of the series. The trend estimates are derived by applying a 13-term Henderson weighted moving average to the respective seasonally adjusted series. Readers are reminded that trend estimates are subject to revision as subsequent months' data become available.

### Symbols and other usages

In this publication -

- r      figure or series revised since previous issue
- p      preliminary

## FURTHER REFERENCES

### Table

3. *Australian Demographic Statistics* (3101.0) (quarterly)
4. *Demography, Victoria* (3311.2) (annual)
5. *The Labour Force, Victoria* (6202.2) (quarterly)
6. *The Labour Force, Australia* (6203.0) (monthly)
7. *Job Vacancies and Overtime, Australia* (6354.0) (quarterly)
8. *Industrial Disputes, Australia* (6321.0) (monthly)
9. *Average Weekly Earnings, States and Australia* (6302.0) (quarterly)
10. *Consumer Price Index* (6401.0) (quarterly)
11. *Price Index of Materials Used in Building Other Than House Building, Six State Capital Cities and Darwin* (6407.0) (monthly)
- Price Index of Materials Used in House Building, Six State Capital Cities* (6408.0) (monthly)
- 12.) *Livestock Products, Australia* (7215.0)
- 13.) (monthly)

### Table

14. *Building Approvals, Victoria* (8731.2) (monthly)
- 15.) *Building Activity, Victoria* (8752.2) (quarterly)
- 16.)
17. *Treasurer of Victoria - Statement of Budget Sector Transactions, Victoria*
- 18.) *State Estimates of Actual and Expected Private New Capital Expenditure* (5646.0) (quarterly)
- 19.)
20. *Housing Finance for Owner Occupation, Australia* (5609.0) (monthly)
21. *Retail Sales of Goods (Excluding Motor Vehicles, Parts, Petrol, etc.) Australia* (8501.0) (monthly)
22. *Foreign Trade Australia: Fasttraccs Database*
23. *Overseas Trade: Fasttraccs Database*
24. *Overseas Trade: Tables MMO3A and MXO3A* (microfiche)
25. *Tourist Accommodation, Victoria* (8635.2) (quarterly)

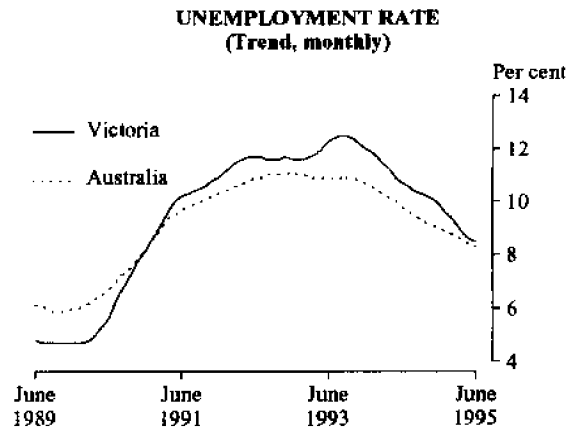
As at June 1995. Publication names and catalogue numbers are subject to revision or change.

## SELECTED FEATURES

### Unemployment Rate

The trend estimate of the unemployment rate for Victoria, fell to 8.5 per cent in June 1995. This is a decrease of a 0.1 percentage point since May 1995, and a decrease of 2.2 percentage points compared with the same period in 1994.

At the national level, the same trend was evident with the unemployment rate decreasing by a 0.1 percentage point since the previous month, and by 1.5 percentage points compared with June 1994.



### New Dwelling Units Approved

In May 1995, there were 2,113 new dwelling units approved (trend estimate). This was a 1.8 per cent decrease since the previous month and a 21.9 per cent decrease from the corresponding period in 1994.

For Australia, there were 11,684 new dwelling units approved in May 1995 compared with 11,959 in April 1995, a decrease of 2.7 per cent. Compared with the same period in 1994, this represents a decrease of 26.8 per cent.

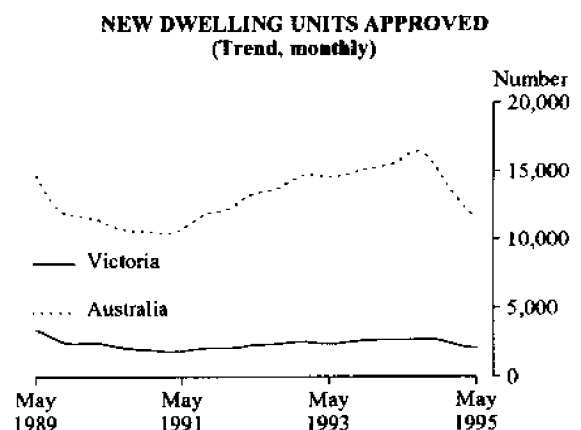


TABLE 1. VICTORIA IN RELATION TO OTHER STATES AND AUSTRALIA, JUNE 1995

Indicator(a)	Unit	Reference	NSW	Vic.	Qld	SA	WA	Tas.	Aust.(b)
		period							
NUMBER									
Employed persons (c)	'000	Jun 95	p 2,770	p 2,063	p 1,516	p 654	p 829	p 199	p 8,268
Unemployment rate									
- trend estimate	per cent	Jun 95	p 7.6	p 8.5	p 8.9	p 10.1	p 7.3	p 9.8	p 8.3
Average weekly total earnings									
- all employees (e)	\$	Feb qr 95	571.80	561.30	496.00	527.90	537.10	502.70	548.20
Consumer price index all groups	1989-90=100	Mar qr 95	113.7	115.0	115.8	117.8	113.0	116.1	114.7
Exports (excludes re-exports)	\$m	May 95	1,309	1,164	1,144	330	1,620	136	5,897
Imports	\$m	May 95	3,074	2,231	744	268	531	33	6,914
Retail turnover - trend estimate	\$m	May 95	3,349	2,219	1,775	748	960	237	9,581
New motor vehicle registrations									
- trend estimate	no.	May 95	20,025	13,041	10,952	3,797	5,511	1,232	56,359
New capital expenditure									
- seasonally adjusted	\$m	Mar qr 95	2,814	1,999	1,425	513	1,688	205	8,817
New dwelling units approved									
- trend estimate	no.	May 95	4,125	2,113	2,913	569	1,442	246	11,684
Value of all buildings approved	\$m	May 95	913	588	564	91	227	37	2,512
Housing finance for owner occupation (f)	\$m	May 95	1,180	636	541	212	371	56	3,106
CHANGE OVER PREVIOUS PERIOD (PER CENT)									
Employed persons (c)		Jun 95	p 1.4	p -0.2	p 0.8	p -0.4	p -0.7	p -0.7	p 0.6
Unemployment rate									
- trend estimate (d)		Jun 95	p -0.2	p -0.1	p 0.1	p 0.1	p 0.0	p -0.3	p -0.1
Average weekly total earnings									
- all employees (e)		Feb qr 95	1.7	1.7	-1.2	4.5	-0.3	0.3	1.2
Consumer price index all groups		Mar qr 95	1.7	1.7	1.8	1.6	1.8	1.7	1.7
Exports (excludes re-exports)		May 95	0.2	12.4	13.4	3.3	7.8	16.9	9.8
Imports		May 95	17.3	26.0	31.5	6.1	8.1	67.8	20.2
Retail turnover - trend estimate		May 95	0.6	0.5	0.7	1.1	0.4	0.6	0.6
New motor vehicle registrations									
- trend estimate		May 95	1.3	1.7	3.6	1.6	1.5	3.8	1.9
New capital expenditure									
- seasonally adjusted		Mar qr 95	0.5	21.0	21.1	-14.1	-16.4	50.9	r 2.5
New dwelling units approved									
- trend estimate		May 95	0.5	-1.8	-3.9	-11.3	-5.3	0.7	-2.7
Value of all buildings approved		May 95	-21.5	75.0	52.0	-31.2	17.2	5.7	8.9
Housing finance for owner occupation (f)		May 95	-1.0	-3.3	-2.0	-2.1	-4.2	-0.7	-2.3
CHANGE OVER SAME PERIOD PREVIOUS YEAR (PER CENT)									
Employed persons (c)		Jun 95	p 5.1	p 4.4	p 6.1	p 2.9	p 5.5	p 1.8	p 4.8
Unemployment rate									
- trend estimate (d)		Jun 95	p -2.1	p -2.2	p -0.3	p -0.6	p -1.1	p -1.1	p -1.5
Average weekly total earnings									
- all employees (e)		Feb qr 95	5.1	5.1	-1.4	2.9	6.1	-0.8	3.6
Consumer price index all groups		Mar qr 95	4.2	3.4	4.5	3.7	4.1	3.8	3.9
Exports (excludes re-exports)		May 95	-17.0	-0.1	11.4	-0.8	24.4	-18.4	4.7
Imports		May 95	22.7	25.0	25.5	26.5	36.1	25.1	24.7
Retail turnover - trend estimate		May 95	5.8	9.6	8.8	13.6	4.7	2.2	7.7
New motor vehicle registrations									
- trend estimate		May 95	13.5	14.2	8.1	14.2	7.9	11.0	12.1
New capital expenditure									
- seasonally adjusted		Mar qr 95	28.3	19.3	17.3	33.1	33.5	144.1	25.4
New dwelling units approved									
- trend estimate		May 95	-11.2	-21.9	-38.8	-41.6	-36.6	-23.7	-26.8
Value of all buildings approved		May 95	18.3	11.3	-10.8	-22.5	-16.6	-11.4	2.6
Housing finance for owner occupation (f)		May 95	-20.4	-29.8	-33.4	-28.8	-32.2	-13.6	-27.6

(a) All figures are original unless otherwise stated. (b) The Australian total includes figures for NT and the ACT, and where applicable, Tasmania. (c) Seasonally adjusted. (d) Change is shown in terms of percentage points. (e) Available only for the middle of the quarter. (f) Trend estimate. All lenders, excludes alterations and additions, to residential buildings.



TABLE 2. ECONOMIC INDICATORS, VICTORIA AND AUSTRALIA, JUNE 1995

Indicator	Unit	Reference period	Latest figure	Victoria		Australia		Victoria as a % of Australia	
				Change over preceding period (per cent)	Change over previous year (a) (per cent)	Change over preceding period (per cent)	Change over previous year (a) (per cent)		
<b>Population -</b>									
Estimated resident population	'000	Dec qr 94	p 4,487	p 0.1	p 0.4	p 17,939	p 0.2	p 1.1	p 25.0
Civilian population aged 15 years and over	'000	Jun 95	p 3,552	p 0.1	p 0.8	p 14,124	p 0.1	p 1.4	p 25.2
<b>Labour force -</b>									
Labour force									
- original	'000	Jun 95	p 2,252	p -0.1	p 2.1	p 8,998	p 0.2	p 3.1	p 25.0
- seasonally adjusted	'000	Jun 95	p 2,259	p -0.2	p 2.1	p 9,018	p 0.4	p 3.0	p 25.0
- trend estimate	'000	Jun 95	p 2,263	p 0.2	p 2.0	p 9,007	p 0.2	p 2.8	p 25.1
<b>Participation rate</b>									
- original series	per cent	Jun 95	p 63.4	..	..	p 63.7	..	..	..
- seasonally adjusted	per cent	Jun 95	p 63.6	..	..	p 63.8	..	..	..
- trend estimate	per cent	Jun 95	p 63.7	..	..	p 63.8	..	..	..
<b>Unemployment rate</b>									
- original series	per cent	Jun 95	p 8.4	..	..	p 8.1	..	..	..
- seasonally adjusted	per cent	Jun 95	p 8.7	..	..	p 8.3	..	..	..
- trend estimate	per cent	Jun 95	p 8.5	..	..	p 8.3	..	..	..
<b>Employed persons by industry (b)</b>									
Agriculture, forestry, fishing etc. (c)	'000	May qr 95	88	-1.4	-4.7	396	-4.2	-2.2	22.1
Mining	'000	May qr 95	8	37.5	16.7	89	4.3	0.8	8.7
Manufacturing	'000	May qr 95	334	-4.3	-0.2	1,107	-1.2	0.5	30.2
Electricity, gas & water supply	'000	May qr 95	23	31.4	0.9	84	0.5	-7.2	27.4
Construction	'000	May qr 95	133	0.5	14.8	606	1.5	8.4	21.9
Wholesale Trade	'000	May qr 95	137	7.1	-1.0	518	4.3	-0.6	26.4
Retail Trade	'000	May qr 95	300	-2.3	3.2	1,200	0.6	3.5	25.0
Accommodation, cafes & restaurants	'000	May qr 95	81	-1.8	15.2	394	3.8	12.4	20.6
Transport & storage	'000	May qr 95	92	-0.3	-0.8	386	-1.4	3.0	23.9
Communication services	'000	May qr 95	37	-14.0	6.6	153	0.1	22.7	24.2
Finance & insurance	'000	May qr 95	87	5.6	-0.1	321	4.4	0.1	27.0
Property & business services	'000	May qr 95	203	7.1	13.1	792	4.5	12.9	25.6
Government administration and defence	'000	May qr 95	89	4.6	8.3	370	3.3	3.8	24.0
Education	'000	May qr 95	148	8.8	8.5	579	8.9	3.6	25.6
Health, community services (d)	'000	May qr 95	182	8.5	14.1	747	4.0	9.3	24.3
Cultural & recreational services	'000	May qr 95	47	13.4	21.5	194	0.4	7.4	24.5
Personal & other services	'000	May qr 95	71	2.9	-13.9	297	-4.7	-2.4	23.9
Total all industries	'000	May 95	2,058	0.6	4.8	8,231	-	3.5	25.0
<b>Job vacancies (b)</b>									
- original series	'000	May qr 95	10.2	-24.4	-33.3	53.7	-6.1	8.7	19.0
<b>Overtime (b)</b>									
Average weekly hours per employee	hours	May qr 95	1.32	-5.0	4.8	1.19	-1.7	-8.5	..
Employees working overtime	per cent	May qr 95	17.6	-0.2	2.4	16.6	0.9	-6.1	..
<b>Average weekly employee earnings (b)</b>									
Full-time adult - ordinary	\$	Feb qr 95	634.50	1.1	4.9	639.10	1.6	4.4	..
All employees - total	\$	Feb qr 95	561.30	1.7	5.1	548.20	1.2	3.6	..
<b>Industrial disputes (e)</b>									
Working days lost per '000 employees	no.	Feb 95	56	5.7	-63.2	77	1.3	-23.8	..
<b>Overseas trade -</b>									
Imports	\$m	May 95	2,231	26.0	25.0	6,914	20.2	24.7	32.3
Exports (f)	\$m	May 95	1,164	12.4	-0.1	5,897	9.8	4.7	19.7
<b>Tourism -</b>									
Caravan parks - takings	'000	Mar 95	6,575	15.4	0.5	34,756	9.5	1.4	18.9
Licensed hotels, motels & guest houses with facilities									
- Takings	'000	Mar 95	49,186	17.1	11.5	273,574	14.0	8.6	18.0
- room occupancy rate	per cent	Mar 95	60	..	..	60	..	..	..

See footnotes at end of table.

TABLE 2. ECONOMIC INDICATORS, VICTORIA AND AUSTRALIA, JUNE 1995—continued

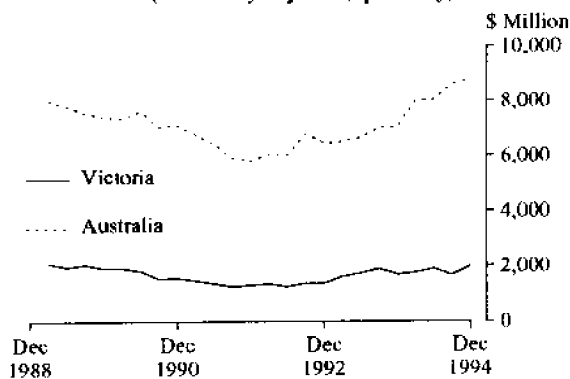
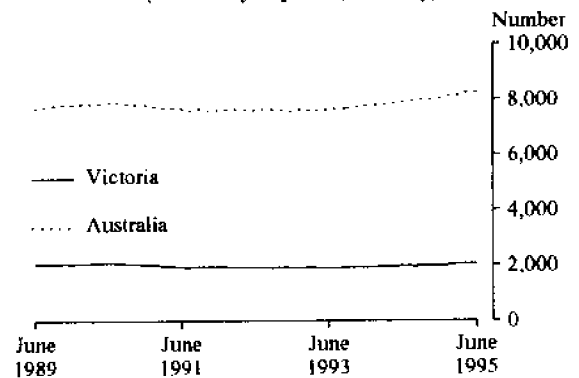
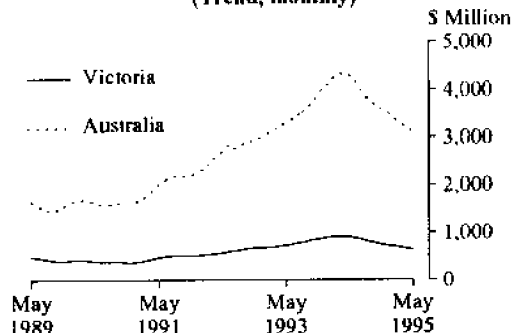
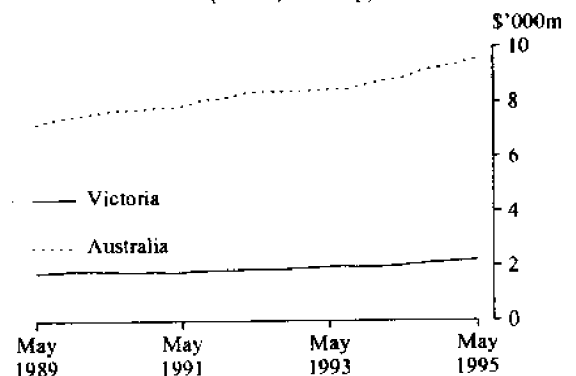
Indicator	Unit	Reference period	Latest figure	Victoria		Australia		Victoria as a % of Australia
				Change over preceding period (per cent)	Change over previous year (a) (per cent)	Change over preceding period (per cent)	Change over previous year (a) (per cent)	
<b>Consumer price index</b>								
All groups (1989-90=100)		Mar qr 95	115.0	1.7	3.4	114.7	1.7	3.9
<b>Retail trade establishments -</b>								
Value of turnover								
- original series	\$m	May 95	2,181	1.8	10.9	9,449	2.8	9.7
- seasonally adjusted	\$m	May 95	2,202	-1.7	0.5	9,566	-1.6	1.0
- trend estimate	\$m	May 95	2,219	0.5	9.6	9,581	0.6	7.7
<b>New motor vehicle registrations</b>								
New motor vehicle registrations								
- original series	no.	May 95	15,468	51.5	29.4	64,123	34.4	20.5
- seasonally adjusted	no.	May 95	14,113	18.6	23.3	57,951	0.1	14.2
- trend estimate	no.	May 95	13,041	1.7	14.2	56,359	1.9	12.1
<b>Finance -</b>								
Personal finance commitments								
- total	\$m	Apr 95	507	-22.3	12.4	2,089	-23.3	4.4
Commercial finance commitments								
- total	\$m	Apr 95	2,942	7.2	29.0	11,149	-15.7	12.2
Lease finance commitments								
- total	\$m	Apr 95	75	-35.1	-21.1	427	-28.1	-9.4
<b>Housing finance for owner occupation -</b>								
Secured loans to individuals								
- number of dwelling units financed (g)(h)	no.	Apr 95	6,151	-25.8	-38.3	25,441	-26.5	-38.1
- value of loans secured (g)(h)	\$m	Apr 95	606	-24.8	-29.2	2,731	-25.3	-30.8
Total number of dwelling units financed (i)(j)(k) — trend	no.	May 95	7,168	-4.3	-36.0	31,735	-3.0	-33.4
Total value of loans secured (i)(j)(k) — trend	\$m	May 95	636	-3.3	-29.8	3,106	-2.3	-27.6
Loan purpose - All lenders (i)								
- Established dwellings (j)	\$m	Apr 95	467	-23.1	-31.2	2,249	-24.6	-28.0
- Construction of dwellings	\$m	Apr 95	82	-31.4	-41.0	447	-28.6	-38.5
- Newly erected dwellings	\$m	Apr 95	31	-12.7	-6.3	151	-20.4	-24.2
<b>Building approvals -</b>								
New dwelling units								
- original series	no.	May 95	2,670	42.4	-11.9	13,779	34.1	-26.1
- seasonally adjusted	no.	May 95	2,297	8.0	-14.7	11,932	3.3	-28.6
- trend estimate	no.	May 95	2,113	-1.8	-21.9	11,684	-2.7	-26.8
Value of non-residential buildings								
- original series	\$m	May 95	231	94.7	52.8	955	-16.6	55.9
Value of all buildings (h)								
- original series	\$m	May 95	588	75.0	11.3	2,512	8.9	2.6
<b>Building commencements -</b>								
New dwelling units, monthly	no.	Mar 95	2,141	-4.3	-25.1	n.a.	n.a.	n.a.
New dwelling units, quarterly	no.	Mar qr 95	6,487	-23.1	-17.2	35,271	-22.9	-13.6
<b>Building activity -</b>								
Value of total building activity								
- commenced	\$m	Mar qr 95	1,283	-20.3	-11.0	6,059	-16.4	-4.6
- done	\$m	Mar qr 95	1,326	-17.6	7.9	6,254	-17.6	6.8
- yet to be done	\$m	Mar qr 95	2,051	-1.2	20.0	9,011	1.0	6.8
<b>Engineering construction -</b>								
Value of work by private sector								
- commenced	\$m	Mar qr 95	265	34.4	-22.0	1,697	-20.6	-6.5
- done	\$m	Mar qr 95	317	17.8	-12.5	1,591	-10.9	-11.9
- yet to be done	\$m	Mar qr 95	493	-6.1	-18.6	3,529	3.6	24.5
Value of work by public sector								
- commenced	\$m	Mar qr 95	259	-1.0	2.1	1,144	-5.9	2.6
- done	\$m	Mar qr 95	288	0.7	14.5	1,428	-6.1	13.6
- yet to be done	\$m	Mar qr 95	184	-17.2	-44.8	1,704	-13.5	-1.4
<b>Manufacturing -</b>								
Actual private new capital expenditure								
- original series	\$m	Mar qr 95	708	-3.3	29.7	-	-	-

See footnotes at end of table.

TABLE 2. ECONOMIC INDICATORS, VICTORIA AND AUSTRALIA, JUNE 1995—continued

Indicator	Unit	Reference period	Latest figure	Victoria		Australia		Victoria as a % of Australia	
				Change over preceding period (per cent)	Change over previous year (a) (per cent)	Change over preceding period (per cent)	Change over previous year (a) (per cent)		
Electricity - production	GWh	Oct 94	2,974	-1.3	-8.7	13,505	-0.6	-0.1	22.0
Gas - available for issue through mains	GJ	Oct 94	16,716	-24.8	8.7	53,231	-7.9	10.8	31.4
<b>Actual private new capital expenditure -</b>									
Building and structures									
- original series	\$m	Mar qr 95	353	-5.7	20.2	2,255	r-1.5	21.0	15.7
Equipment, plant & machinery									
- original series	\$m	Mar qr 95	1,416	-2.1	19.1	5,713	r-18.9	27.4	24.8
Total new capital expenditure									
- original series	\$m	Mar qr 95	1,769	-2.8	19.3	7,967	r-14.6	25.5	22.2
- seasonally adjusted	\$m	Mar qr 95	1,999	21.0	19.3	8,817	r 2.5	25.4	22.7

(a) Change over same period previous year. (b) Available only for the middle month of the quarter. (c) Includes hunting. (d) Comprises health, libraries, etc., welfare institutions and other community groups. (e) 12 months ended. (f) Excludes re-exports. (g) All banks. (h) Includes alterations and additions to residential buildings. (i) Excludes alterations and additions to residential buildings. (j) Includes refinancing. (k) All lenders.

PRIVATE NEW CAPITAL EXPENDITURE  
(Seasonally adjusted, quarterly)EMPLOYED PERSONS  
(Seasonally adjusted, monthly)HOUSING FINANCE  
TOTAL VALUE OF SECURED HOUSING  
FINANCE COMMITMENTS TO INDIVIDUALS  
(Trend, monthly)RETAIL TURNOVER  
(Trend, monthly)

**TABLE 3. ESTIMATED RESIDENT POPULATION, VICTORIA**  
(’000)

Period	At end of period			Increase during period		Mean estimated resident population for year ended		Melbourne Statistical Division at 30 June
	Males	Females	Persons	Natural	Total	30 June	31 Dec	
1991-92	2,206.5	2,244.6	4,451.0	33.4	30.6	4,437.1	4,450.3	3,179.5
1992-93	2,211.6	2,252.6	4,464.2	33.6	13.1	4,459.6	4,464.9	3,189.2
1993-94 p	2,216.5	2,259.6	4,476.1	32.4	11.9	4,469.6	4,487.0	3,198.3
1990 -								
December qr	2,183.0	2,217.7	4,400.7	8.8	9.5	..	..	..
1991 -								
March qr	2,189.0	2,224.4	4,413.4	8.9	12.7	..	..	..
June qr	2,192.1	2,228.3	4,420.4	8.3	7.0	..	..	..
September qr	2,196.4	2,233.2	4,429.6	8.2	9.2	..	..	..
December qr	2,198.6	2,236.6	4,435.2	8.4	5.6	..	..	..
1992 -								
March qr	2,203.9	2,241.8	4,445.7	9.2	10.5	..	..	..
June qr	2,206.4	2,244.5	4,451.0	8.0	5.3	..	..	..
September qr	2,208.6	2,247.3	4,455.8	8.2	4.8	..	..	..
December qr	2,209.8	2,249.7	4,459.4	8.5	3.6	..	..	..
1993 -								
March qr	2,212.0	2,252.5	4,464.4	8.8	5.0	..	..	..
June qr	2,211.6	2,252.6	4,464.2	8.1	-0.2	..	..	..
September qr p	2,212.3	2,254.0	4,466.3	7.6	2.1	..	..	..
December qr p	2,212.7	2,255.3	4,468.0	7.9	1.7	..	..	..
1994 -								
March qr	2,215.2	2,258.1	4,473.3	9.0	5.3	..	..	..
June qr	2,216.5	2,259.6	4,476.1	7.9	2.8	..	..	..
Sept qr p	2,219.3	2,232.9	4,482.1	6.9	6.0	..	..	..
Dec qr p	2,221.3	2,265.7	4,487.0	7.9	4.9	..	..	..

**TABLE 4. BIRTHS, DEATHS, AND MARRIAGES, VICTORIA**

Period	Number of registrations				Annual rate per 1,000 of mean estimated resident population			Infant deaths per 1,000 live births
	Births	Deaths	Infant deaths	Marriages	Births	Deaths	Marriages	
1991-92	65,478	31,447	390	28,567	14.71	7.05	6.41	5.93
1992-93	65,542	31,111	373	27,943	14.70	6.98	6.26	5.71
1993-94	64,542	31,778	345	27,316	14.44	7.11	6.11	5.35
1991 -								
December qr	15,897	7,420	95	8,499	..	..	..	..
Year - 1991	65,724	31,158	439	28,535	14.87	7.05	6.46	6.68
1992 -								
March qr	16,798	7,624	97	9,302	..	..	..	..
June qr	16,179	8,097	79	6,430	..	..	..	..
September qr	16,695	8,418	98	4,179	..	..	..	..
December qr	16,378	7,777	97	8,518	..	..	..	..
Year - 1992	66,050	31,916	371	28,429	14.85	7.18	6.39	5.61
1993 -								
March qr	16,552	7,243	101	8,756	..	..	..	..
June qr	15,917	7,673	77	6,490	..	..	..	..
September qr	16,240	8,545	75	4,092	..	..	..	..
December qr	15,555	7,617	104	8,080	..	..	..	..
Year - 1993	64,264	31,078	357	27,418	14.38	6.96	6.14	5.57
1994 -								
March qr	16,685	7,564	85	8,862	..	..	..	..
June qr	16,062	8,048	81	6,282	..	..	..	..
September qr	16,037	8,144	91	4,149	..	..	..	..
December qr	15,498	7,556	81	7,681	..	..	..	..
Year - 1994	64,282	32,312	338	26,974	14.36	7.22	6.03	5.26
1995 -								
March qr p	16,606	7,608	62	8,893	..	..	..	..

**TABLE 5. LABOUR FORCE STATUS OF THE CIVILIAN POPULATION AGED  
15 YEARS AND OVER, VICTORIA**

Month	Employed		Unemployed looking for work			Labour force ( <i>'000</i> )	Not in labour force ( <i>'000</i> )	Civilian population 15 years and over ( <i>'000</i> )	Unemp- loyment rate (%)	Partici- pation rate (%)
	Full- time ( <i>'000</i> )	Total ( <i>'000</i> )	Full- time ( <i>'000</i> )	Part- time ( <i>'000</i> )	Total ( <i>'000</i> )					
<b>MALES</b>										
1994 -										
April	1,009.4	1,127.5	129.3	13.4	142.8	1,270.2	453.7	1,723.9	11.2	73.7
May	1,006.4	1,125.7	131.4	12.9	144.3	1,269.9	454.4	1,724.3	11.4	73.6
June	1,014.0	1,134.8	122.3	16.8	139.1	1,273.9	450.9	1,724.8	10.9	73.9
July	1,026.0	1,150.7	112.2	13.8	126.0	1,276.7	448.8	1,725.5	9.9	74.0
August	995.0	1,122.6	119.5	14.5	134.0	1,256.7	469.6	1,726.3	10.7	72.8
September	1,025.9	1,149.2	115.7	16.5	132.2	1,281.4	445.7	1,727.1	10.3	74.2
October	1,022.8	1,152.9	106.5	12.5	119.0	1,272.0	455.9	1,727.8	9.4	73.6
November	1,019.9	1,139.0	114.3	13.4	127.6	1,266.7	461.9	1,728.6	10.1	73.3
December	1,037.7	1,171.6	113.4	11.7	125.1	1,296.6	432.7	1,729.4	9.6	75.0
1995 -										
January	1,018.5	1,145.5	121.4	13.5	134.9	1,280.5	450.5	1,730.9	10.5	74.0
February	1,040.6	1,166.5	115.1	15.8	130.9	1,297.4	435.1	1,732.5	10.1	74.9
March	1,037.9	1,170.3	103.1	13.7	116.8	1,287.2	446.9	1,734.0	9.1	74.2
April	1,041.0	1,169.1	99.3	12.3	111.6	1,280.7	454.9	1,735.6	8.7	73.8
May	1,035.7	1,166.4	103.6	13.0	116.5	1,282.9	454.3	1,737.2	9.1	73.9
<b>FEMALES</b>										
1994 -										
April	461.5	833.0	72.7	31.7	104.4	937.4	860.7	1,798.1	11.1	52.1
May	468.2	838.0	69.9	26.8	96.7	934.6	864.1	1,798.7	10.3	52.0
June	463.6	841.5	63.5	26.3	89.9	931.3	868.0	1,799.4	9.6	51.8
July	476.5	854.1	62.6	29.4	92.0	946.1	854.2	1,800.3	9.7	52.6
August	466.2	838.0	65.6	29.1	94.7	932.6	868.6	1,801.2	10.1	51.8
September	490.7	868.8	61.3	34.5	95.8	964.6	837.6	1,802.1	9.9	53.5
October	471.6	854.7	59.2	23.9	83.0	937.7	865.3	1,803.0	8.9	52.0
November	475.2	841.5	60.7	23.7	84.4	926.0	877.9	1,803.8	9.1	51.3
December	483.0	854.3	68.6	29.1	97.7	952.0	852.8	1,804.7	10.3	52.7
1995 -										
January	478.1	818.2	75.6	25.0	100.7	918.9	887.3	1,806.1	11.0	50.9
February	486.2	849.6	70.1	32.0	102.1	951.6	855.9	1,807.6	10.7	52.6
March	491.2	876.2	62.1	32.7	94.8	971.0	838.0	1,809.0	9.8	53.7
April	489.6	877.8	56.3	26.9	83.1	960.9	849.7	1,810.6	8.7	53.1
May	498.8	892.0	58.9	21.5	80.4	972.4	839.8	1,812.2	8.3	53.7
<b>PERSONS</b>										
1994 -										
April	1,470.9	1,960.4	202.1	45.1	247.2	2,207.6	1,314.3	3,521.9	11.2	62.7
May	1,474.7	1,963.6	201.3	39.7	240.9	2,204.6	1,318.5	3,523.0	10.9	62.6
June	1,477.6	1,976.3	185.8	43.1	228.9	2,205.2	1,319.0	3,524.2	10.4	62.6
July	1,502.4	2,004.7	174.9	43.2	218.0	2,222.8	1,303.1	3,525.8	9.8	63.0
August	1,461.2	1,960.6	185.1	43.5	228.7	2,189.3	1,338.2	3,527.5	10.4	62.1
September	1,516.7	2,018.0	177.0	51.0	228.0	2,245.9	1,283.3	3,529.2	10.1	63.6
October	1,494.3	2,007.6	165.7	36.4	202.1	2,209.7	1,321.1	3,530.8	9.1	62.6
November	1,495.1	1,980.5	175.0	37.1	212.1	2,192.6	1,339.8	3,532.4	9.7	62.1
December	1,520.7	2,025.8	182.0	40.8	222.8	2,248.6	1,285.5	3,534.1	9.9	63.6
1995 -										
January	1,496.6	1,963.8	197.0	38.6	235.6	2,199.3	1,337.7	3,537.1	10.7	62.2
February	1,526.8	2,016.1	187.1	47.8	233.0	2,249.0	1,291.0	3,540.1	10.4	63.5
March	1,529.2	2,046.5	165.2	46.4	211.6	2,258.1	1,284.9	3,543.0	9.4	63.7
April	1,530.6	2,046.8	155.6	39.1	194.8	2,241.6	1,304.6	3,546.2	8.7	63.2
May	1,534.4	2,058.3	162.5	34.4	196.9	2,255.2	1,294.0	3,549.2	8.7	63.5

**TABLE 6. EMPLOYED PERSONS BY INDUSTRY (a), VICTORIA**  
(<sup>'000</sup>)

Industry division	Feb. 1994	May 1994	Aug. 1994	Nov. 1994	Feb 1995	May 1995
<b>MALES</b>						
Agriculture, Forestry and Fishing	65.0	64.3	61.2	61.0	62.9	57.5
Mining	6.2	*4.5	5.4	4.9	4.6	5.9
Manufacturing	242.9	243.1	245.1	256.3	257.5	243.8
Electricity, Gas and Water Supply	17.2	18.6	17.4	15.8	14.5	20.0
Construction	105.3	99.1	101.8	108.0	112.5	114.1
Wholesale Trade	92.6	97.4	84.2	85.7	91.7	95.0
Retail Trade	134.9	141.9	153.5	145.7	151.5	149.9
Accommodation, Cafes and Restaurants	32.9	32.0	28.5	32.5	39.3	37.3
Transport and Storage	71.5	73.2	62.3	66.2	72.5	72.8
Communication Services	24.0	22.8	26.1	32.7	30.6	24.9
Finance and Insurance	37.2	39.1	40.6	36.0	35.7	37.7
Property and Business Services	99.9	104.5	103.2	100.2	104.9	110.0
Government Administration and Defence	44.3	46.9	47.2	48.2	47.7	47.4
Education	44.6	45.2	45.9	45.6	46.3	48.7
Health and Community Services	36.0	38.5	39.0	38.2	38.3	42.3
Cultural and Recreational Services	18.9	18.6	21.0	22.1	19.7	24.0
Personal and Other Services	32.4	36.2	40.4	40.1	36.4	34.9
<b>Total</b>	<b>1,106.0</b>	<b>1,125.7</b>	<b>1,122.6</b>	<b>1,139.0</b>	<b>1,166.5</b>	<b>1,166.4</b>
<b>FEMALES</b>						
Agriculture, Forestry and Fishing	27.5	27.6	23.9	24.8	25.9	30.1
Mining	*2.4	*2.0	*1.2	*0.3	*1.0	*1.8
Manufacturing	90.1	91.7	92.0	95.3	91.4	90.2
Electricity, Gas and Water Supply	4.7	*4.2	*3.8	*3.9	*3.0	*3.0
Construction	15.1	16.6	15.7	18.9	19.6	18.8
Wholesale Trade	38.1	40.9	34.3	35.0	36.1	41.9
Retail Trade	143.0	148.7	155.1	155.7	155.5	150.1
Accommodation, Cafes and Restaurants	36.2	38.5	40.2	42.2	43.4	43.9
Transport and Storage	20.9	19.6	22.9	18.7	19.9	19.2
Communication Services	12.6	11.9	14.7	14.6	12.5	12.1
Finance and Insurance	50.9	47.7	47.3	45.7	46.3	48.8
Property and Business Services	74.1	74.8	83.1	75.5	84.3	92.8
Government Administration and Defence	39.4	35.2	35.9	39.7	37.2	41.5
Education	89.8	91.2	88.3	90.3	89.6	99.2
Health and Community Services	114.0	120.7	124.4	121.7	129.2	139.4
Cultural and Recreational Services	19.4	20.5	23.8	25.4	22.1	23.4
Personal and Other Services	42.2	46.2	31.3	33.9	32.5	36.0
<b>Total</b>	<b>820.4</b>	<b>838.0</b>	<b>838.0</b>	<b>841.5</b>	<b>849.6</b>	<b>892.0</b>
<b>PERSONS</b>						
Agriculture, Forestry and Fishing	92.4	92.0	85.2	85.8	88.8	87.6
Mining	8.6	6.5	6.6	5.2	5.6	7.7
Manufacturing	333.0	334.7	337.1	351.6	348.9	334.0
Electricity, Gas and Water Supply	21.9	22.8	21.2	19.7	17.5	23.0
Construction	120.4	115.8	117.4	127.0	132.2	132.9
Wholesale Trade	130.8	138.2	118.5	120.7	127.8	136.9
Retail Trade	278.0	290.7	308.6	301.4	307.0	300.0
Accommodation, Cafes and Restaurants	69.2	70.5	68.7	74.7	82.7	81.2
Transport and Storage	92.4	92.6	85.2	84.8	92.4	92.1
Communication Services	36.6	34.7	40.7	47.3	43.0	37.0
Finance and Insurance	88.0	86.7	87.9	81.7	82.0	86.6
Property and Business Services	174.1	179.3	186.3	175.7	189.2	202.7
Government Administration and Defence	83.7	82.1	83.1	87.9	85.0	88.9
Education	134.4	136.3	134.2	135.9	136.0	147.9
Health and Community Services	150.0	159.2	163.4	159.9	167.5	181.7
Cultural and Recreational Services	38.3	39.0	44.8	47.5	41.8	47.4
Personal and Other Services	74.7	82.3	71.7	74.0	68.9	70.9
<b>Total</b>	<b>1,926.4</b>	<b>1,963.6</b>	<b>1,960.6</b>	<b>1,980.5</b>	<b>2,016.1</b>	<b>2,058.3</b>

(a) From August 1994 industry data are classified according to the Australian and New Zealand Standard Industrial Classification (ANZSIC). Previous quarters' data have been backcast. See the Information Paper *Labour Force Survey: Introduction of ANZSIC for industry data (Replacement publication)(6259.0)* for details.

\* Subject to sampling variability too high for most practical uses.

TABLE 7. JOB VACANCIES, VICTORIA

Month	Vacancies all persons (000)	Industry (000)		Sector (000)		Job vacancy rate (per cent)
		Manu- facturing	Other	Public	Private	
1993 -						
February	7.3	*0.7	6.6	1.0	6.3	0.5
May	5.4	*0.6	4.8	1.2	*4.2	0.3
August	9.1	1.2	7.9	1.1	7.9	0.6
November	9.9	1.2	8.7	1.8	8.1	0.6
1994 -						
February	11.3	2.2	9.1	1.7	9.6	0.7
May	15.3	2.2	13.0	2.0	13.3	1.0
August	12.5	4.0	8.5	2.0	10.5	0.7
November	12.8	3.7	9.1	1.7	11.1	0.8
1995 -						
February	13.5	3.5	10.0	2.1	11.4	0.8
May	10.2	1.1	9.1	2.0	8.2	0.6

\*Subject to sampling variability too high for most practical uses.

TABLE 8. INDUSTRIAL DISPUTES CAUSING STOPPAGE OF WORK, VICTORIA (a)

Period	Number of disputes		Workers involved (000)		Working days lost (000)					
	Beginning in period	Total	Beginning in period	Total	Manu- facturing	Education, Health, Community			Other industries	Total
						Con- struction	services	Other		
1993 -										
December	7	9	4.0	5.7	10.4	-	0.3	0.3		11.0
1994 -										
January	4	6	0.9	1.1	0.3	-	-	0.5		0.8
February	7	9	0.4	2.0	0.7	-	0.2	0.3		1.2
March	7	8	1.0	5.7	0.7	-	1.0	0.5		2.2
April	8	11	1.9	2.9	1.1	-	0.1	0.7		1.9
May	9	13	1.2	4.2	3.4	-	0.5	0.2		4.1
June	n.p.	3	-	0.1	0.2	-	-	-		0.2
July	11	11	5.8	5.8	2.8	-	-	14.6		17.4
August	10	11	1.8	2.5	2.2	0.4	-	2.0		4.6
September	8	9	15.8	15.9	2.6	1.6	3.0	5.0		12.2
October	12	15	11.3	12.3	8.8	-	1.2	6.1		16.1
November	13	14	2.7	2.8	7.4	-	0.7	0.8		8.9
December	12	14	7.2	7.3	1.6	-	0.8	14.5		16.9
1995 -										
January	5	7	0.8	2.2	0.5	-	-	2.1		2.6
February	15	17	7.7	7.8	4.4	0.1	0.9	1.3		6.7
March	11	13	3.0	3.9	8.1	-	0.2	0.3		8.6

Prior to January 1994 Industry information was classified according to ASIC. From that time, Industry data has been classified to ANZSIC.

TABLE 9. AVERAGE WEEKLY EARNINGS, OF EMPLOYEES (ORIGINAL SERIES), VICTORIA (\$)

Reference period - pay period ending on or before	Males		Females			Persons			
	Full-time adults	All males	Full-time adults	All females	All employees	Full-time adults	Total employees	Total employees	
									Ordinary time earnings
1993 -									
19 November	636.70	687.70	624.20	536.30	550.40	417.90	600.50	638.20	527.00
1994 -									
18 February	641.00	685.90	625.10	542.00	555.80	430.90	604.70	638.20	533.90
20 May	652.30	698.50	626.10	553.20	569.00	429.50	616.70	651.90	534.50
19 August	651.70	716.60	641.70	545.20	559.10	417.20	615.20	662.70	542.20
18 November	664.70	721.40	649.40	561.60	574.80	437.30	627.30	668.30	551.70
1995 -									
17 February	674.40	732.00	661.40	563.40	578.20	442.30	634.50	676.60	561.30

**TABLE 10. CONSUMER PRICE INDEX**  
(Base of each group: year 1989-90 = 100.0)

Period	Melbourne									Eight capital cities All groups (weighted average)
	Food	Clothing	Housing	Household equipment and operation	Transportation	Tobacco and alcohol	Health and personal care	Recreation and education	All groups	
1991-92	104.9	106.8	98.9	108.3	109.8	116.8	126.3	108.6	108.1	107.3
1992-93	106.3	107.8	93.1	108.3	112.7	122.7	129.8	110.8	108.9	108.4
1993-94	107.9	107.3	92.7	110.0	115.8	132.1	135.4	113.6	111.1	110.4
1992 -										
March qr	104.9	106.4	97.8	107.9	110.1	116.9	131.7	108.7	108.3	107.6
June qr	106.0	107.5	95.5	108.9	110.1	117.2	127.5	108.9	108.2	107.3
September qr	105.5	106.8	93.3	107.8	112.0	118.0	127.2	109.2	107.9	107.4
December qr	105.5	108.3	92.3	108.6	112.0	118.8	128.5	110.2	108.2	107.9
1993 -										
March qr	107.3	107.7	92.4	108.2	113.1	126.4	131.5	112.0	109.5	108.9
June qr	107.0	108.4	94.5	108.7	113.7	127.7	132.1	111.9	110.1	109.3
September qr	107.8	107.9	93.8	109.0	115.0	129.8	131.9	112.2	110.5	109.8
December qr	108.1	107.5	92.4	109.3	115.8	131.7	132.9	113.3	110.8	110.0
1994 -										
March qr	107.8	106.7	92.2	110.8	114.9	133.0	137.4	114.1	111.2	110.4
June qr	107.9	106.9	92.4	110.8	117.5	134.0	139.2	114.8	112.0	111.2
September qr	108.6	107.0	92.7	110.3	118.4	134.0	139.8	114.9	112.2	111.9
December qr	108.8	107.4	95.0	110.9	118.5	134.7	140.8	116.4	113.1	112.8
1995 -										
March qr	111.2	107.0	100.4	111.5	118.5	137.1	143.4	117.9	115.0	114.7

**TABLE 11. PRICE INDEX OF MATERIALS USED IN BUILDING, MELBOURNE**

Group	1995						Weighted average of six State capital cities (May)
	1991-92	1992-93	1993-94	March	April	May	
House building (Base year: 1985-86 = 100.0)							
<b>All groups</b>	<b>137.3</b>	<b>141.1</b>	<b>149.6</b>	<b>156.1</b>	<b>156.3</b>	<b>157.1</b>	<b>158.6</b>
Other than house building (Base year: 1989-90 = 100.0) -							
Structural timber	97.2	103.2	119.5	125.1	124.5	126.6	128.1
Clay bricks	106.9	108.5	109.3	114.3	114.3	114.4	112.2
Ready mixed concrete	94.0	108.2	123.4	124.0	124.0	124.4	112.2
Precast concrete products	102.8	99.5	99.2	107.3	107.4	107.4	113.3
Steel decking and cladding	107.5	109.0	104.7	106.8	106.8	106.8	108.7
Structural steel	93.3	91.3	93.3	95.5	95.5	95.5	106.2
Reinforcing steel bar, mesh, etc.	97.7	99.2	102.0	102.2	100.2	100.2	110.6
Aluminium windows	96.4	96.0	96.5	100.4	100.4	100.4	108.7
Fabricated Steel Products (a)	109.5	108.4	109.4	112.2	112.4	111.7	109.9
Builders' hardware	112.6	117.2	116.2	112.8	112.8	112.9	117.6
Sand and aggregate	119.0	113.8	119.5	114.6	114.6	114.6	120.7
Carpet	100.4	98.8	98.3	98.5	98.5	98.5	100.0
Paint and other coatings	119.2	118.8	125.0	135.2	135.2	133.8	125.2
Non-ferrous pipes and fittings	89.4	90.9	86.5	104.8	104.9	104.8	121.7
All groups excluding electrical materials and mechanical services	101.8	103.4	106.6	109.2	109.0	109.1	111.6
All electrical materials	110.7	108.9	107.3	114.8	116.4	116.6	116.0
All mechanical services	105.6	105.5	106.8	109.2	109.8	110.1	111.0
All plumbing materials	104.1	104.0	105.3	113.7	113.8	114.5	118.8
<b>All groups</b>	<b>103.4</b>	<b>104.4</b>	<b>106.7</b>	<b>109.6</b>	<b>109.7</b>	<b>109.8</b>	<b>111.6</b>

a) Previously "Steel Windows, doors, louvres etc".

Commencing with this table, this Index has been compiled on the basis of a revised list of items and updated weighting pattern. The reference base of the index has been updated to 1989-90=100.0. See Appendices in October 1993 issue of Catalogue number 6407.0



TABLE 12. LIVESTOCK SLAUGHTERINGS, VICTORIA

Period	Cattle	Calves	Sheep	Lambs	Pigs	Chickens
	'000	'000	'000	'000	'000	'000
1991-92	1,448.8	497.7	3,637.3	6,318.9	1,095.2	73,832.2
1992-93	1,365.8	608.5	3,722.6	6,288.1	1,070.8	78,614.7
1993-94	1,393.9	583.4	3,975.9	5,600.8	1,188.5	85,797.9
1993 -						
December	129.4	8.4	474.4	518.2	102.3	8,281.9
1994 -						
January	114.8	5.6	412.8	406.3	82.4	8,102.0
February	116.6	4.9	424.8	443.7	83.5	7,223.7
March	138.5	11.2	395.5	555.5	109.0	7,226.9
April	118.3	26.2	312.5	452.3	96.5	7,468.3
May	132.8	47.2	292.6	528.3	102.4	6,934.7
June	111.4	89.0	195.2	504.3	103.0	8,237.1
July	103.7	79.7	187.7	507.5	91.8	6,413.1
August	99.6	161.6	190.9	538.6	97.5	6,105.1
September	122.2	121.7	246.5	574.9	110.1	6,364.0
October	125.1	69.4	327.0	581.8	101.6	6,874.2
November	117.6	35.9	385.1	532.5	97.6	6,055.3
December	122.3	7.9	351.7	516.6	104.9	9,646.3
1995 -						
January	102.6	5.8	330.5	464.5	88.9	6,548.4
February	r117.7	r4.8	r330.6	r478.4	87.7	6,200.2
March	r130.7	11.0	r295.1	r522.7	106.7	6,731.2
April r	r111.6	r23.0	r182.6	r457.0	r84.3	r6,520.6
May	132.1	46.0	183.1	490.9	112.9	6,208.8

TABLE 13. MEAT PRODUCTION, VICTORIA

Period	Meat (carcass weight)					Dressed weight of poultry
	Beef	Veal	Mutton	Lamb	Pigmeat	
	tonnes	tonnes	tonnes	tonnes	tonnes	
1991-92	302,385	11,907	75,058	111,452	74,093	113,482
1992-93	299,907	14,948	81,907	113,220	70,535	119,966
1993-94	315,279	13,466	85,010	101,386	78,488	129,234
1993 -						
December	30,025	346	10,560	9,161	6,891	11,701
1994 -						
January	26,685	367	8,843	7,369	5,507	11,324
February	27,545	318	8,924	8,176	5,558	10,032
March	32,677	512	8,247	10,181	7,272	11,166
April	28,042	716	6,540	8,169	6,261	11,523
May	29,318	1,185	6,213	9,733	6,763	10,820
June	24,781	1,894	4,144	9,326	6,857	11,487
July	23,328	1,859	3,987	9,189	6,289	10,572
August	20,893	3,375	3,840	9,726	6,814	9,180
September	25,307	2,721	5,026	9,785	7,379	9,715
October	27,899	1,502	6,775	10,295	7,185	10,284
November	26,637	819	7,839	9,397	7,220	8,942
December	27,469	275	6,956	8,995	7,303	10,496
1995 -						
January	23,167	226	6,467	8,244	6,182	9,218
February	r25,760	205	r6,431	r8,525	r6,187	9,542
March	r29,632	328	r5,578	r9,378	r7,471	r10,541
April r	r25,250	r555	r3,478	r7,759	r5,990	r9,923
May	30,047	1,041	3,634	8,780	8,405	10,548

TABLE 14. BUILDING APPROVALS

Period	New dwelling units (a)						Alter- ations and additions to residential buildings (a)	Non-residential building (b)		Total all building
	Private sector		Public sector		Total			Private sector	Total	
	No.	Value (\$'000)	No.	Value (\$'000)	No.	Value (\$'000)		Value (\$'000)	Value (\$'000)	
MELBOURNE STATISTICAL DIVISION										
1991-92	15,901	1,381,716	1,201	76,279	17,102	1,457,995	413,323	978,594	1,242,404	3,113,722
1992-93	18,949	1,663,728	886	52,930	19,835	1,716,658	429,731	858,160	1,138,241	3,284,630
1993-94	20,798	1,925,655	999	71,616	21,797	1,997,271	509,231	1,619,834	2,138,618	4,645,121
1994 -										
January	1,481	143,699	107	9,107	1,588	152,806	28,977	34,727	48,386	230,169
February	1,750	162,359	87	6,314	1,837	168,673	34,870	189,966	332,290	535,833
March	1,794	166,557	143	11,625	1,937	178,182	41,247	90,157	112,686	332,115
April	1,650	157,047	63	4,960	1,713	162,007	33,322	102,007	129,992	325,322
May	2,068	198,809	47	3,162	2,115	201,970	85,947	92,651	111,876	399,793
June	1,729	163,041	91	6,842	1,820	169,884	39,440	556,694	575,462	784,786
July	1,905	180,550	20	1,342	1,925	181,892	36,403	45,682	59,834	278,129
August	2,071	196,942	21	1,180	2,092	198,122	66,262	66,975	91,663	356,047
September	1,866	185,935	54	3,379	1,920	189,313	41,439	89,855	100,972	331,724
October	2,041	199,201	59	3,699	2,100	202,900	85,991	117,537	296,755	585,646
November	2,073	198,840	134	9,618	2,207	208,457	48,868	107,606	149,066	406,391
December	1,860	239,867	62	5,910	1,922	245,777	27,551	54,702	72,260	345,588
1995 -										
January	1,231	117,579	88	7,792	1,319	125,371	26,662	93,066	124,920	276,953
February	1,560	149,489	133	9,118	1,693	158,607	45,869	149,770	218,203	422,679
March	1,473	135,412	77	7,725	1,550	143,137	70,084	84,976	106,011	319,232
April	1,386	135,001	10	809	1,396	135,810	30,202	59,713	91,186	257,197
May	1,935	226,429	121	12,348	2,056	238,777	51,528	118,061	188,796	479,101
TOTAL VICTORIA										
1991-92	24,290	2,063,184	1,723	107,753	26,013	2,170,937	514,111	1,114,875	1,473,715	4,158,763
1992-93	28,155	2,408,177	1,416	85,963	27,644	3,027,181	533,042	1,066,219	1,406,261	4,433,442
1993-94	27,750	2,718,022	1,414	99,663	31,750	2,817,685	623,548	1,853,551	2,502,670	5,943,903
1994 -										
January	2,051	192,530	132	10,627	2,183	203,157	36,499	43,559	65,260	304,916
February	2,526	225,713	190	11,852	2,716	237,565	44,074	209,488	363,431	645,070
March	2,725	243,886	180	13,877	2,905	257,763	53,743	104,225	165,302	476,808
April	2,338	216,800	84	6,500	2,422	223,299	42,114	121,514	178,947	444,361
May	2,941	274,591	88	5,691	3,029	280,282	99,677	118,845	151,136	528,095
June	2,604	239,130	101	7,578	2,705	246,709	49,482	584,205	608,719	904,910
July	2,684	247,521	48	2,939	2,732	250,461	44,660	64,751	80,629	375,750
August	2,959	268,997	82	4,658	3,041	273,655	77,081	79,609	111,454	462,191
September	2,597	247,139	122	7,070	2,719	254,209	51,176	105,438	119,546	424,931
October	2,708	256,386	68	4,246	2,776	260,632	94,900	133,972	347,271	702,803
November	2,864	267,116	167	11,597	3,031	278,713	59,966	121,186	173,754	512,433
December	2,369	288,674	122	9,588	2,511	298,262	34,585	64,119	89,161	422,009
1995 -										
January	1,670	156,157	113	9,289	1,783	165,446	33,352	105,670	152,660	351,457
February	2,077	195,776	183	12,211	2,260	207,987	54,539	160,034	237,605	500,131
March	2,112	190,960	114	10,043	2,226	201,003	80,834	105,401	132,093	413,929
April	1,825	173,579	50	3,245	1,875	176,824	40,442	76,600	118,649	335,915
May	2,516	279,956	154	14,272	2,670	294,229	62,740	153,918	230,951	587,920

(a) Valued at \$10,000 and over. (b) Valued at \$50,000 and over.

**TABLE 15. NEW HOUSES AND OTHER RESIDENTIAL BUILDINGS: NUMBER OF DWELLING UNITS, VICTORIA**

	<i>New houses</i>				<i>New other residential buildings</i>			
	<i>Approved</i>	<i>Commenced</i>	<i>Under construction</i>	<i>Completed</i>	<i>Approved</i>	<i>Commenced</i>	<i>Under construction</i>	<i>Completed</i>
1991-92	23,065	22,392	11,210	22,401	2,948	3,033	2,165	2,877
1992-93	27,158	25,734	11,805	25,083	2,438	2,413	2,022	2,566
1993-94	28,057	27,001	n.a.	n.a.	3,693	3,511	n.a.	n.a.
1993 -								
Dec qr	7,024	7,428	11,696	6,897	799	828	1,643	1,073
1994 -								
Mar qr	6,784	6,688	12,331	5,988	1,020	1,144	2,249	533
Jun qr	7,234	7,009	12,362	6,925	922	882	2,355	750
Sept qr	7,792	7,087	12,534	6,915	700	701	2,439	613
Dec qr	7,033	r7,521	r11,931	r8,006	1,283	r909	r2,259	r995
1995 -								
Mar qr	5,491	p5,488	p11,355	p6,046	778	p999	p2,712	p546

**TABLE 16. VALUE OF BUILDING, VICTORIA**  
(\$m)

<i>Period</i>	<i>Residential buildings</i>		<i>Non-residential building</i>						<i>Total</i>
	<i>New</i>	<i>Alterations and additions</i>	<i>Shops</i>	<i>Factories</i>	<i>Business premises</i>	<i>Education</i>	<i>Health</i>	<i>Other</i>	
<b>COMMENCED</b>									
1991-92	2,196.0	542.7	161.9	353.5	590.2	194.1	112.1	218.1	4,368.5
1992-93	2,428.2	562.0	189.4	187.0	395.7	178.5	273.4	294.4	4,508.1
1993-94	2,876.5	700.0	456.6	227.1	666.9	211.2	240.0	727.4	6,105.7
1994 -									
Mar qr	710.2	157.3	115.1	42.9	223.2	50.9	79.1	59.3	1,438.0
Jun qr	743.4	216.0	96.3	82.5	176.6	45.5	32.6	481.0	1,872.9
Sept qr	732.2	164.0	52.2	56.1	122.6	47.1	41.2	49.6	1,265.0
Dec pr r	808.1	181.9	96.4	67.5	128.2	102.3	37.4	188.3	1,610.1
1995 -									
Mar qr p	674.3	152.4	109.3	33.8	179.2	48.6	29.8	56.0	1,283.5
<b>UNDER CONSTRUCTION AT END OF PERIOD</b>									
1991-92	1,262.4	258.7	177.5	554.2	2,147.6	173.4	243.3	167.6	4,984.7
1992-93	1,297.2	243.6	74.1	347.9	995.8	132.1	412.6	227.8	3,731.2
1993-94	1,474.8	360.6	415.7	165.1	439.5	144.4	539.9	652.1	4,192.0
1994 -									
Mar qr	1,405.4	286.3	341.6	123.3	518.1	135.4	525.5	227.6	3,563.2
June qr	1,474.8	360.6	415.7	165.1	439.5	144.4	539.9	652.0	4,192.0
Sept qr	1,503.0	378.4	403.2	177.8	483.3	147.4	374.8	619.2	4,087.1
Dec qr r	1,471.3	346.4	401.9	173.3	467.8	183.4	296.7	749.3	4,089.8
1995 -									
Mar qr p	1,503.9	352.9	472.7	156.2	539.3	171.7	269.1	710.0	4,175.8
<b>COMPLETED</b>									
1991-92	2,242.6	543.1	195.4	390.1	1,523.4	210.8	166.4	518.8	5,790.5
1992-93	2,411.7	583.5	289.7	380.5	1,565.1	222.2	107.4	237.6	5,797.7
1993-94	2,725.1	601.3	182.5	424.0	1,279.0	201.0	113.3	295.5	5,821.7
1994 -									
Mar qr	584.8	145.2	34.6	77.8	574.8	57.8	21.6	42.4	1,539.0
June qr	683.5	151.6	45.2	39.6	262.4	37.7	23.2	90.9	1,334.1
Sept qr	715.1	152.0	69.2	56.6	86.3	45.0	177.7	83.9	1,385.8
Dec qr r	853.1	223.6	94.9	73.2	146.8	70.1	112.6	68.7	1,643.0
1995 -									
Mar qr p	652.5	150.6	31.4	54.9	117.8	59.7	47.2	99.0	1,213.0

TABLE 17. STATEMENT OF BUDGET SECTOR TRANSACTIONS, VICTORIA (a)

(\$m)

	<i>Budget Estimate 1994-95</i>	<i>Actual 10 months to 30.4.1995</i>	<i>Actual 10 months to 30.4.1994</i>
<b>DEPARTMENTAL OUTLAYS</b>			
Agriculture, Energy and Minerals	149.5	93.5	70.7
Arts, Sport, and Tourism	291.0	181.4	178.4
Business and Employment	249.1	149.2	104.1
Conservation and Natural Resources	292.4	225.6	195.5
Education	3,351.3	2,822.5	2,647.4
Health and Community Services	4,083.8	3,245.0	3,172.0
Justice	1,250.5	1,015.8	820.6
Parliament	48.9	34.7	30.8
Planning and Development	544.5	313.5	271.7
Premier and Cabinet	43.5	31.3	30.2
Transport	1,464.1	1,093.1	1,193.9
Treasurer and Finance	2,799.2	1,644.3	3,547.8
Commonwealth Grants on-passed	<u>790.6</u>	<u>714.4</u>	<u>695.4</u>
	15,358.4	11,564.3	12,958.5
<i>less</i> Superannuation Contributions	342.6	267.9	0.0
Capital Charge Received	101.2	29.7	0.0
Payroll Tax Paid by Departments	<u>237.2</u>	<u>195.9</u>	<u>190.6</u>
<b>TOTAL DEPARTMENTAL OUTLAYS</b>	<b><u>14,677.4</u></b>	<b><u>11,070.8</u></b>	<b><u>12,767.9</u></b>
<i>Current Outlays</i>	13,667.0	10,600.0	11,675.1
<i>Capital Outlays</i>	1,010.4	470.9	1,092.9
<b>REVENUE</b>			
Taxes, Fees and Fines			
Payroll Tax	1,811.0	1,528.1	1,432.8
Stamp Duty on Financial and Capital Transactions	986.0	800.2	849.7
State Deficit Levy on rateable properties	181.0	53.7	55.0
Financial Institutions Transaction Taxes	557.7	462.0	451.1
Franchise Fees	1,084.3	888.7	896.9
Motor Vehicle Taxes	800.2	655.9	603.9
Land Taxes	387.7	229.7	141.6
Gambling Taxes	864.8	731.0	623.4
Public Authority Contribution	290.0	268.7	250.3
Taxes on Insurance	315.9	255.2	246.0
Other Taxes, Fees and Fines	<u>194.4</u>	<u>166.9</u>	<u>151.3</u>
Total Taxes, Fees and Fines	7,473.0	6,040.1	5,702.1
Interest Received	98.3	32.9	11.1
Royalties	49.2	41.0	39.3
Income from Public Trading and Financial Enterprises	655.0	647.9	585.0
Other State Revenue	<u>79.4</u>	<u>56.6</u>	<u>55.8</u>
Total Other Revenue	881.9	778.4	691.1
<b>GRANTS</b>			
Grants Received from Commonwealth	5,508.1	4,546.7	4,426.3
Commonwealth Grants for On-Passing	<u>790.6</u>	<u>717.4</u>	<u>696.9</u>
Total Grants	<u>6,298.7</u>	<u>5,264.1</u>	<u>5,123.2</u>
<b>TOTAL REVENUE AND GRANTS RECEIVED</b>	<b><u>14,653.6</u></b>	<b><u>12,082.6</u></b>	<b><u>11,516.4</u></b>
<b>FINANCING TRANSACTIONS</b>			
Net Advances from Commonwealth	-497.0	-417.7	-215.0
Other Net Borrowing	515.7	-1,108.9	1,646.6
Other, including changes in Cash Balances and Investments	<u>5.1</u>	<u>514.9</u>	<u>-180.2</u>
<b>TOTAL FINANCING TRANSACTIONS</b>	<b><u>23.8</u></b>	<b><u>-1,011.7</u></b>	<b><u>1,251.5</u></b>

Source: Treasurer of Victoria

(a) This monthly statement of budget sector transactions (Niemeyer Statement) is presented in *Government Finance Statistics* format.

**TABLE 18. PRIVATE NEW CAPITAL EXPENDITURE BY SELECTED INDUSTRIES AND TYPE OF ASSET, VICTORIA (a)**  
(\$m)

Period	Selected industries			Total	Type of asset	
	Mining	Manufacturing	Other selected industries		New buildings and structures	Equipment, Plant, and Machinery
<b>ACTUAL</b>						
1992-93	282	2,183	3,162	5,627	1,397	4,230
1993-94	441	2,651	3,973	7,065	1,501	5,564
1993						
September qtr	91	623	1,032	1,746	404	1,342
December qtr	150	777	1,154	2,081	476	1,606
1994						
March qtr	114	546	823	1,483	294	1,189
June qtr	86	706	963	1,755	327	1,428
September qtr	83	731	1,092	1,907	309	1,598
December qtr	158	731	931	1,821	375	1,447
<b>EXPECTED</b>						
1994-95	523	3,026	3,925	7,474	1,574	5,901
1995-96	813	2,895	3,259	6,967	1,911	5,056

(a) The series in this table are now classified to the Australian and New Zealand Standard Industrial Classification (ANZSIC).

**TABLE 19. COMMERCIAL FINANCE COMMITMENTS, VICTORIA**  
(\$m)

Period	Fixed loan facilities					Total	Type of lender			
	Construction	Purchase of real property	Purchase of plant and equipment	Wholesale	Other		Revolving credit facilities	Total commitments	Banks	All other lenders
1993 -										
October	42.6	192.4	115.0	48.2	163.7	562.1	1,572.9	2,113.6	1,571.6	541.9
November	40.3	214.5	125.1	59.0	207.5	646.2	1,631.3	2,285.6	1,447.6	838.0
December	57.9	220.6	145.7	57.5	495.1	977.0	1,003.6	2,007.7	1,555.3	452.3
1994 -										
January	24.3	206.4	89.6	32.3	118.3	470.9	1,175.2	1,653.9	1,319.8	334.1
February	32.6	202.1	107.8	61.3	171.3	575.1	835.7	1,417.5	1,120.7	296.8
March	42.2	218.7	346.5	70.2	610.7	1,288.2	1,233.3	2,541.5	2,126.6	414.9
April	36.1	199.6	119.9	56.3	218.2	630.3	1,112.4	1,742.7	1,254.7	488.0
May	116.9	273.6	145.1	109.8	180.9	826.3	1,172.3	2,001.9	1,713.9	288.0
June	83.4	273.5	169.0	72.8	455.0	1,053.8	1,224.2	2,278.7	1,833.5	445.3
July	52.1	221.6	144.7	70.2	302.9	791.5	1,029.5	1,840.9	1,241.5	599.3
August	83.7	246.9	157.6	79.8	301.1	869.4	1,061.3	1,930.6	1,669.8	260.8
September	56.6	216.9	140.5	67.8	209.8	691.7	1,436.1	2,132.1	1,668.8	463.3
October	64.3	181.2	139.3	68.3	208.7	661.7	656.4	1,318.1	1,063.2	254.9
November	85.9	238.5	181.5	55.5	366.9	928.3	1,143.3	2,071.6	1,618.2	453.3
December	56.6	242.1	162.9	56.5	402.3	920.3	1,567.8	2,488.1	2,059.6	428.5
1995 -										
January	79.1	149.1	119.4	44.8	227.2	619.7	1,139.6	1,759.3	1,352.1	407.1
February	41.0	175.6	138.4	55.6	248.5	659.1	675.0	1,334.2	1,040.1	294.0
March	82.7	223.5	170.3	94.9	253.6	825.1	1,198.7	2,023.7	1,593.2	430.6
April	68.3	215.0	124.1	60.0	241.0	708.6	1,606.0	2,314.6	1,610.2	704.3

TABLE 20. SECURED HOUSING FINANCE COMMITMENTS, VICTORIA

Period	Original Series		Seasonally Adjusted		Trend Estimates	
	Dwelling units	\$million	Dwelling units	\$million	Dwelling units	\$million
1993 -						
October	10,162	818	10,477	844	10,537	838
November	10,867	876	10,460	845	10,890	859
December	11,497	921	11,336	871	11,229	879
1994 -						
January	9,092	689	11,680	899	11,480	895
February	10,979	846	12,019	935	11,611	907
March	12,334	972	11,313	893	11,602	914
April	10,649	851	11,481	918	11,459	913
May	12,165	986	11,003	895	11,204	906
June	12,147	997	10,972	894	10,848	888
July	10,516	866	10,739	894	10,451	864
August	10,720	876	9,847	815	10,018	834
September	9,408	800	9,658	814	9,577	801
October	8,760	727	8,968	751	9,182	771
November	9,441	806	8,438	718	8,872	748
December	8,707	753	9,427	785	8,632	731
1995 -						
January	6,188	526	7,732	664	8,419	718
February	7,810	664	8,555	736	8,198	704
March	8,814	764	8,220	710	7,977	690
April	6,632	581	7,327	644	7,800	680

TABLE 21. RETAIL TURNOVER BY INDUSTRY (EXCLUDING MOTOR VEHICLES, PARTS, PETROL, ETC.), VICTORIA  
(\$m)

Month	Food retailing	Department stores	Clothing and soft good retailing	Household good retailing	Recreational good retailing	Other retailing	Hospitality and services	Total
1994 -								
February	762.2	149.1	123.3	230.8	92.1	151.2	234.3	1,743.0
March	875.1	189.2	157.1	243.2	100.8	177.1	272.5	2,015.0
April	810.8	197.0	165.7	222.7	94.1	168.8	263.2	1,922.3
May	804.4	212.1	165.6	242.2	101.9	178.8	261.7	1,966.7
June	812.9	210.8	146.3	251.4	103.0	174.0	259.2	1,957.6
July	836.4	169.9	148.9	250.1	112.3	183.3	277.3	1,978.2
August	831.8	182.2	138.7	255.0	119.7	191.6	278.6	1,997.6
September	854.4	202.8	141.8	249.7	114.1	192.8	290.2	2,045.8
October	887.1	215.2	152.6	251.0	121.0	212.5	307.0	2,146.4
November	878.4	223.1	156.0	266.4	130.7	219.9	313.4	2,187.9
December	1,070.8	418.7	236.8	348.7	196.9	305.2	355.8	2,932.9
1995-								
January	885.5	165.1	154.2	258.2	119.1	179.5	295.3	2,056.9
February	851.0	152.0	127.1	238.4	112.2	185.0	271.7	1,937.4
March	922.8	188.2	145.7	265.4	118.1	208.9	304.7	2,153.8
April	902.1	215.7	166.5	241.9	115.1	207.4	292.4	2,141.1
May	905.9	211.6	153.2	268.7	129.1	219.5	292.6	2,180.6

**TABLE 22. EXPORTS AND IMPORTS BY SECTIONS OF THE AUSTRALIAN EXPORT AND IMPORT COMMODITY CLASSIFICATIONS, VICTORIA (a)**  
(\$m)

Section	1993-94		10 months ended Apr. 1995	
	Imports	Exports	Imports	Exports
0 Food and live animals chiefly for food	855	2,910	805	2,356
1 Beverages and tobacco	141	67	158	60
2 Crude materials, inedible (except fuels)	512	1,356	498	1,473
3 Mineral fuels, lubricants, and related materials	432	714	422	356
4 Animal and vegetable oils, fats, and waxes	65	63	57	67
5 Chemicals and related products, nec	1,971	666	1,804	608
6 Manufactured goods classified chiefly by material	3,529	1,918	3,210	1,742
7 Machinery and transport equipment	8,970	1,694	8,443	1,669
8 Miscellaneous manufactured articles	3,573	677	3,442	632
9 Commodities and transactions of merchandise trade, nec	722	2,264	805	1,717
<b>Total</b>	<b>20,770</b>	<b>12,329</b>	<b>19,645</b>	<b>10,681</b>

(a) Note: Figures in Tables 22, 23 and 24 have been substantially revised due to updated procedures.

**TABLE 23. OVERSEAS TRADE, MAJOR TRADING PARTNERS, VICTORIA (a)**  
(\$m)

Country	1992-93		1993-94		10 months ended Apr. 1995	
	Imports	Exports	Imports	Exports	Imports	Exports
Belgium-Luxembourg	166	53	192	32	168	24
Brazil	121	23	132	37	132	51
Canada	266	147	292	148	314	94
China	1,173	540	1,415	481	1,362	489
Fiji	25	128	31	133	32	100
Finland	160	6	194	5	194	5
France	383	180	432	133	401	142
Germany	1,448	254	1,550	246	1,656	212
Hong Kong	262	577	209	532	168	450
India	150	77	171	107	190	89
Indonesia	232	199	324	242	279	224
Italy	501	170	594	186	594	217
Japan	3,315	1,632	3,779	2,177	3,323	1,513
Korea, Republic of	465	689	491	914	500	839
Malaysia	284	346	317	614	342	637
Mexico	49	39	48	110	46	59
Netherlands	172	45	199	32	190	35
New Zealand	868	955	1,024	1,099	972	1,025
Pakistan	88	73	83	41	73	27
Papua New Guinea	28	198	92	211	101	160
Philippines	46	235	49	256	89	240
Saudi Arabia	147	113	173	133	185	106
Singapore	364	1,186	404	1,128	407	1,140
South Africa	42	92	71	115	57	151
Sweden	318	30	408	22	404	31
Switzerland	223	13	250	29	254	47
Taiwan	765	515	747	522	674	507
Thailand	223	320	261	350	267	360
United Kingdom	1,050	333	1,229	339	1,113	304
United States of America	3,968	936	4,696	918	4,263	632
Other and unknown	845	941	913	1,038	895	771
<b>Total</b>	<b>18,147</b>	<b>11,044</b>	<b>20,770</b>	<b>12,329</b>	<b>18,750</b>	<b>10,681</b>

(a) The list of countries in this table has been revised to reflect volume of trade with Victoria in the 1993-94 Financial Year. Information about Victoria's trade with other countries is available on request.

**TABLE 24. VALUE OF OVERSEAS TRADE, VICTORIA AND AUSTRALIA**  
(\$m)

Period	Victoria			Australia		
	Imports	Exports	Excess of exports	Imports	Exports (incl. re-exports)	Excess of exports
1991-92	15,353	9,545	-5,808	50,984	55,027	+4,043
1992-93	18,147	11,044	-7,103	59,575	60,702	+1,127
1993-94	20,770	12,329	-8,441	64,470	64,602	+132
1993-						
November	1,797	1,007	-790	5,839	5,491	-348
December	1,633	1,075	-558	5,478	5,530	+52
1994-						
January	1,610	974	-636	4,863	4,739	-124
February	1,500	950	-550	4,402	4,843	+441
March	1,890	1,118	-772	5,850	5,681	-169
April	1,600	968	-632	5,033	5,235	+202
May	1,784	1,166	-618	5,545	5,884	+339
June	1,670	958	-712	5,430	5,283	-147
July	1,881	956	-925	5,775	5,427	-348
August	2,145	939	-1,206	6,662	5,326	-1,336
September	1,915	982	-933	6,010	5,332	-678
October	2,062	1,041	-1,021	6,290	5,782	-508
November	r2,101	1,147	r-954	r6,406	5,777	r-629
December	1,891	1,155	-736	r5,833	5,562	r-271
1995-						
January	1,882	1,037	-845	r6,098	4,908	r-1,190
February	1,828	1,184	-644	5,567	5,156	-411
March	2,170	1,200	-970	6,763	6,199	r-564
April	1,771	1,041	-730	5,750	5,667	-83

**TABLE 25. TOURIST ACCOMMODATION**

Period	Hotels, motels, etc. with facilities				Short-term caravan parks			
	No. of establishments	Room		Takings from accommodation (\$'000)	No. of establishments	Site		Takings from accommodation (\$'000)
		Capacity (No. of guest rooms)	occupancy rates (per cent)			Capacity (No. of sites and cabins)	occupancy rates (per cent)	
<b>MELBOURNE STATISTICAL DIVISION</b>								
1993 -								
March qr	248	14,817	55	73,860	49	5,417	58	1,561
June qr	250	14,928	51	70,420	48	5,378	48	1,182
Sept qr	249	15,085	50	67,677	50	5,468	46	1,646
Dec qr	242	14,956	58	79,496	50	5,443	54	1,855
1994 -								
March qr	241	14,824	60	80,798	49	5,417	59	1,801
June qr	242	14,830	57	73,416	50	5,442	47	1,147
Sept qr	238	14,721	59	79,369	54	5,742	45	1,716
Dec qr	240	14,843	66	93,034	53	5,709	55	2,012
1995 -								
March qr	240	14,905	68	94,245	53	5,694	59	2,055
<b>TOTAL VICTORIA</b>								
1993 -								
March qr	1,040	29,944	48	107,633	444	53,935	45	16,443
June qr	1,051	30,278	45	101,757	445	54,351	37	10,038
Sept qr	1,043	30,316	43	100,636	436	53,422	34	9,914
Dec qr	1,025	30,265	48	110,502	442	53,601	39	13,469
1994 -								
March qr	1,017	29,988	51	115,454	441	54,052	45	17,183
June qr	1,018	29,968	48	105,846	441	53,971	38	10,268
Sept qr	1,003	29,680	48	113,668	438	53,831	35	10,602
Dec qr	1,006	29,892	53	127,072	436	53,377	40	14,503
1995 -								
March qr	1,003	29,971	56	131,900	435	53,307	47	17,781





## For more information ...

The ABS publishes a wide range of statistics and other information on Australia's economic and social conditions. Details of what is available in various publications and other products can be found in the *ABS Catalogue of Publications and Products* available at all ABS Offices (see below for contact details).

### Information Consultancy Service

Information tailored to special needs of clients can be obtained from the Information Consultancy Service available at ABS Offices (see Information Inquiries below for contact details).

### National Dial-a-Statistic Line

0055 86 400

(Steadycorn P/L: premium rate 25c/21.4 secs.)

This number gives 24-hour access, 365 days a year, for a range of statistics.

### Electronic Data Services

A large range of data is available via on-line services, diskette, magnetic tape, tape cartridge and CD ROM. For more details about these electronic data services, contact any ABS Office (see below).

### Bookshops and Subscriptions

There is a large number of ABS publications available from ABS bookshops (see below Bookshop Sales for contact details). The ABS also provides a subscription service through which nominated publications are supplied by mail on a regular basis (telephone Subscription Service toll free on 1800 02 0608 Australia wide).

## Sales and Inquiries

Regional Offices	Information Inquiries	Bookshop Sales
SYDNEY (02)	268 4611	268 4620
MELBOURNE (03)	9 615 7000	9 615 7829
BRISBANE (07)	222 6351	222 6350
PERTH (09)	360 5140	360 5307
ADELAIDE (08)	237 7100	237 7582
HOBART (002)	20 5800	20 5800
CANBERRA (06)	207 0326	207 0326
DARWIN (089)	43 2111	43 2111
<b>National Office</b>		
ACT (06)	252 6007	1800 02 0608

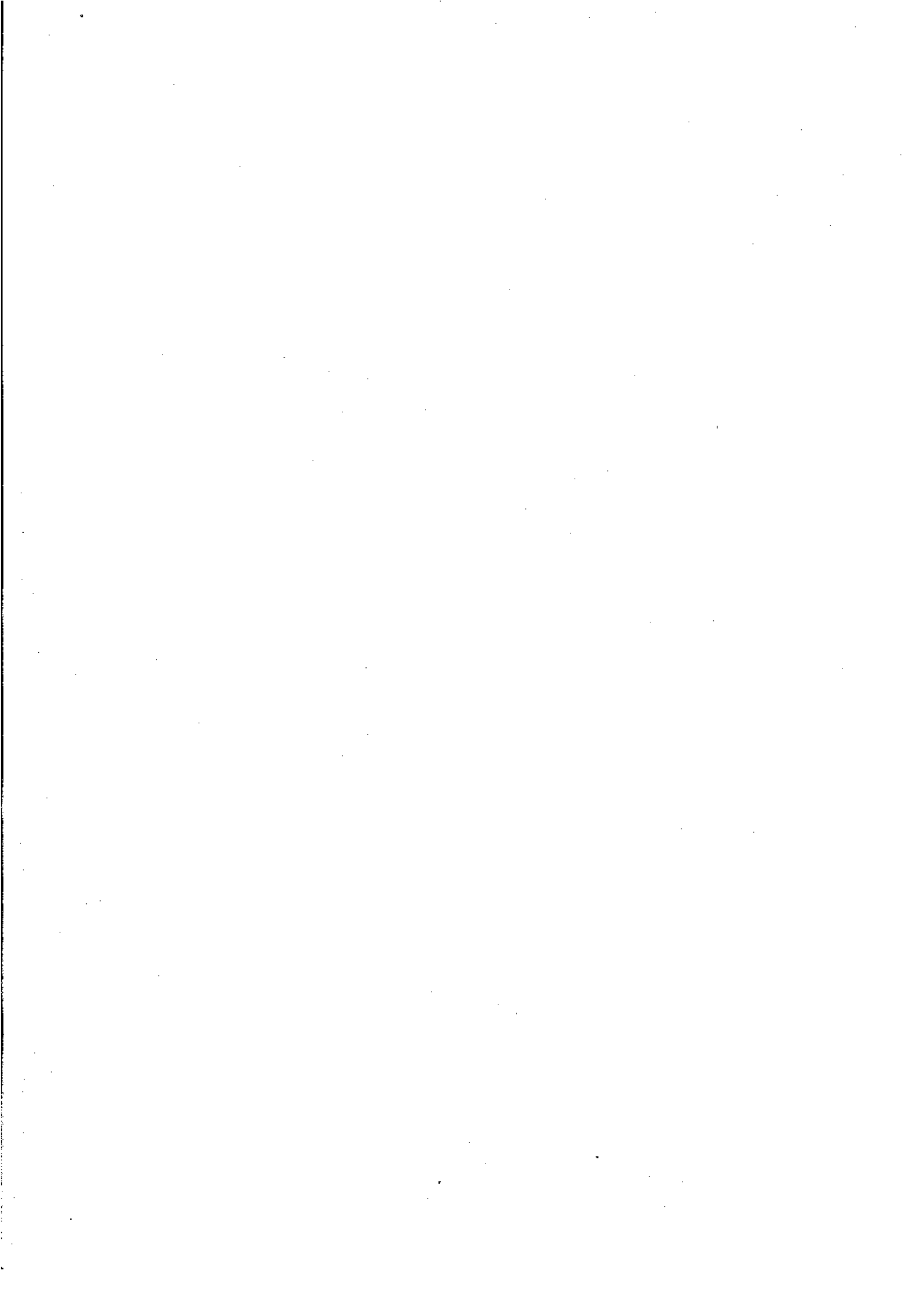
### ABS Email Addresses

Keylink	STAT.INFO/ABS
X.400	(C:AU,A:TELMEMO,O:ABS,SN:INFO,FN:STAT)
Internet	STAT.INFO@ABS. TELEMEMO.AU



Information Services, ABS, PO Box 10, Belconnen ACT 2616





ABS Catalogue No. 1303.2

MONTHLY SUMMARY OF STATISTICS, VICTORIA

June 1995



2130320006951  
ISSN 0158-202X

Recommended retail price: \$12.00